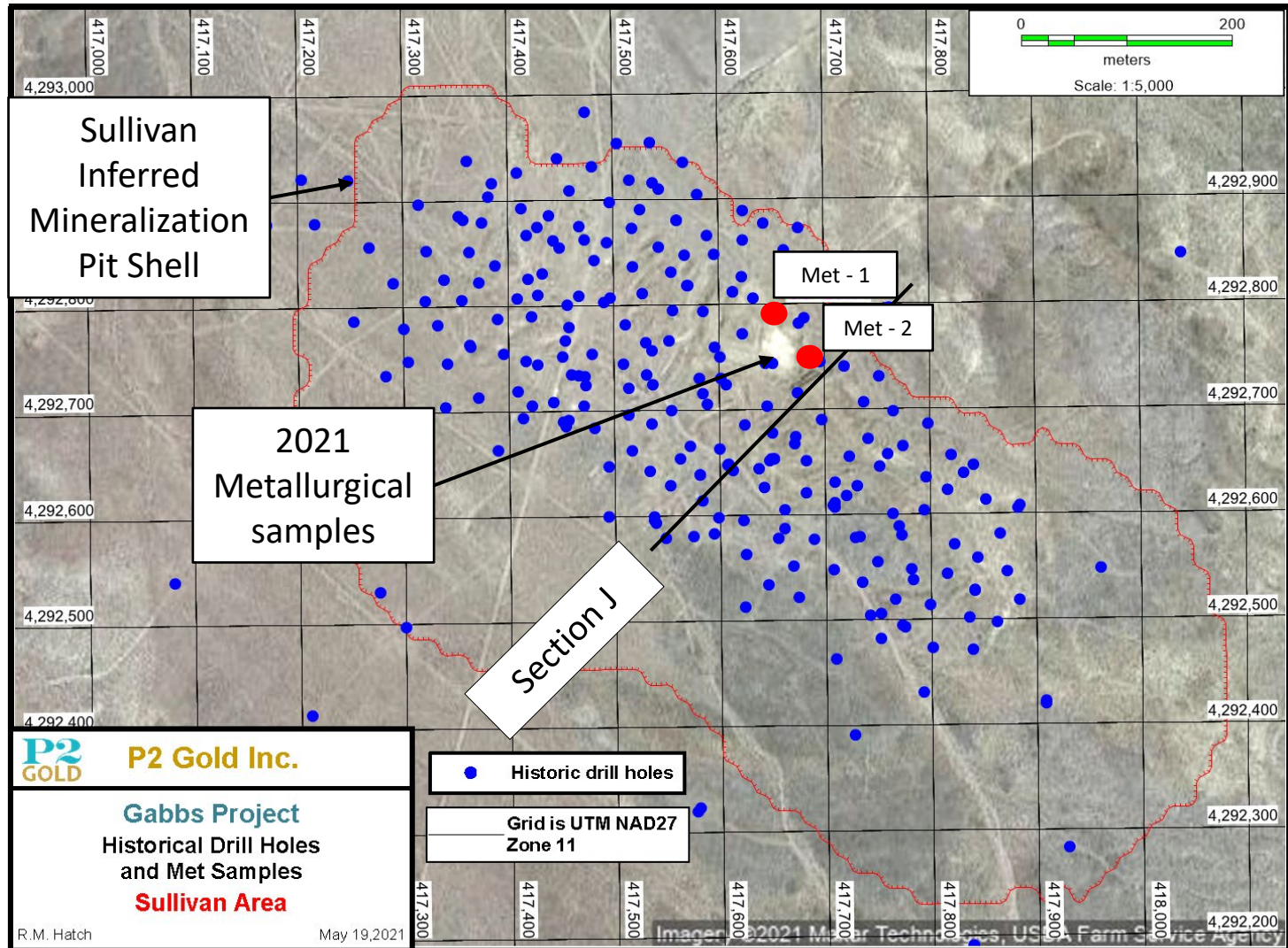


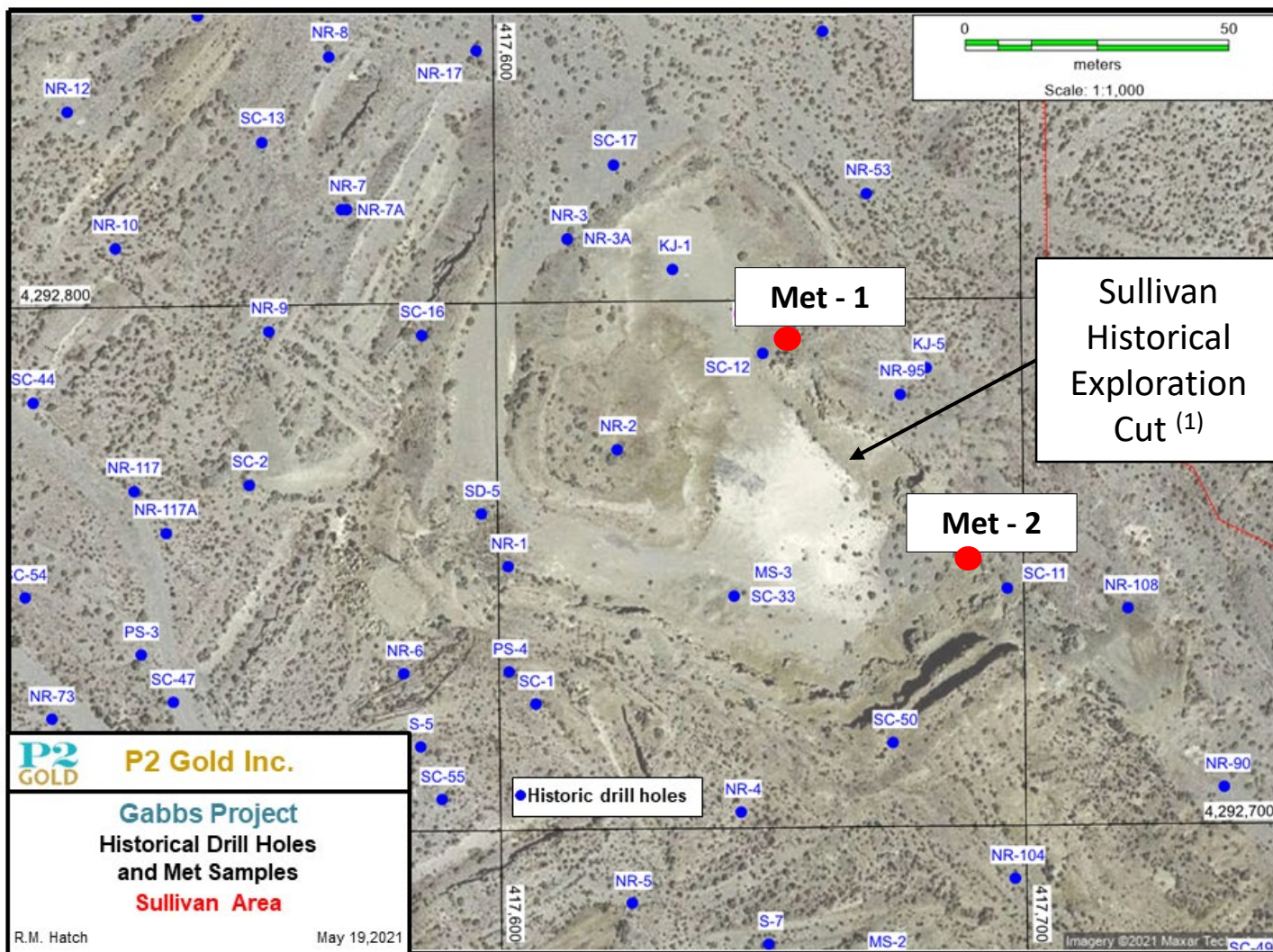
Sullivan Zone

2021 Metallurgical Sample Locations



Sullivan Zone

2021 Metallurgical Sample Locations



(1) Sullivan Historical Exploration Cut refers to the location where a pit had been excavated by Glamis Gold in 1988 to supply material for a 30,000-tonne bulk-sample heap leach. See National Instrument 43-101 Technical Report *Updated Mineral Resource Estimate of the Gabbs Gold-Copper Property* dated January 13, 2021.